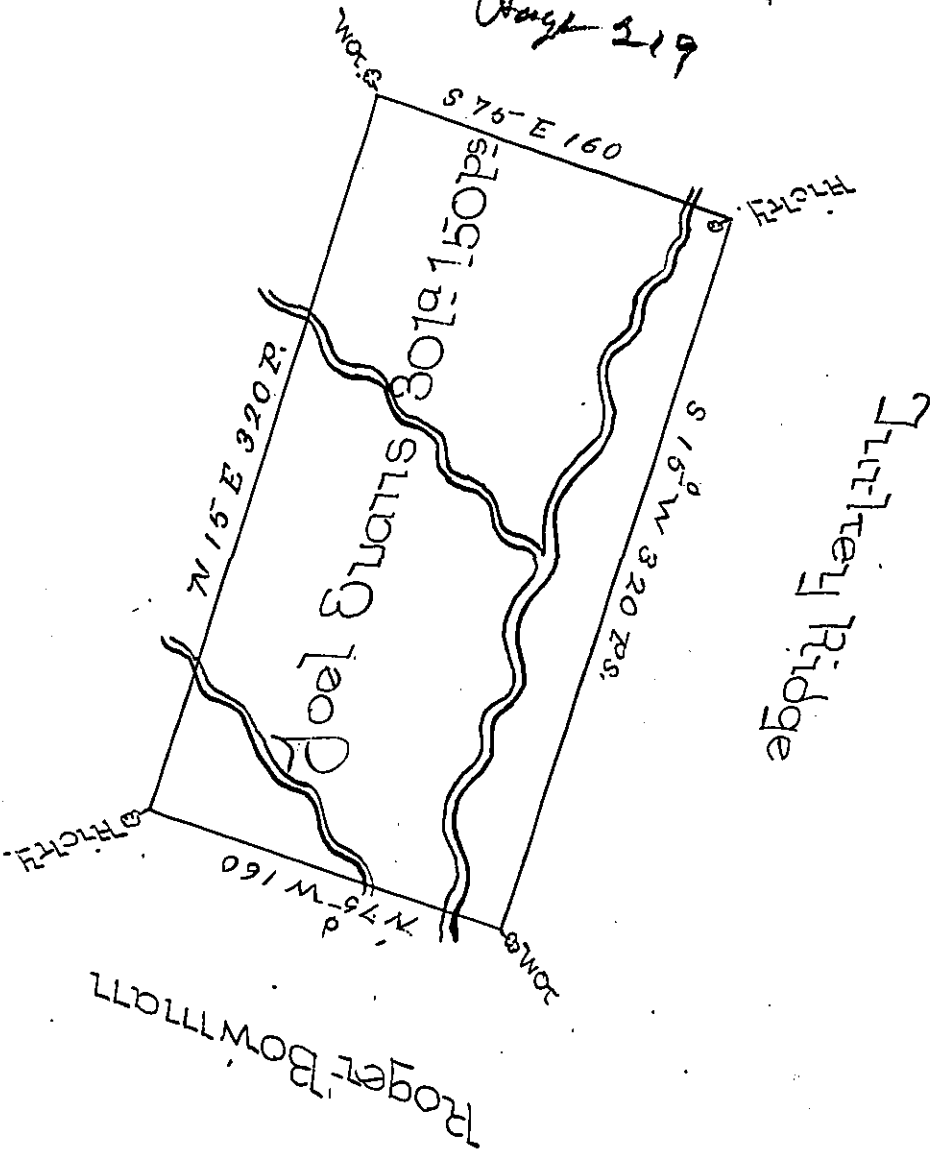


Saml Eldridge

Page 219



In pursuance of an order No 1527, dated the fourteenth day of October 1766, surveyed the 9th day of May 1767 for Joel Evans the above described Tract of Land Situate on the North West branch of Sidling Hill Creek in the County of Cumberland containing Three Hundred and one acres & 150 P^s and the usual Allowance of six acres P^c for Roads &c^a

R Richard Lea D.S.

To John Evans Esq^r S^r.

IN TESTIMONY that the above is a copy of the original remaining on file in the Department of Internal Affairs of Pennsylvania, made conformably to an Act of Assembly approved the 16th day of February, 1833, I have hereunto set my Hand and caused the Seal of said Department to be affixed at Harrisburg, this first day of November 1898.

James W. Lewis
Secretary of Internal Affairs.